

# ARDEX TLT™ Waterproofing Accessories

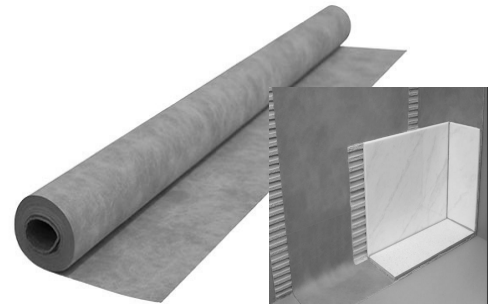
## Installation Guide

### SUBFLOOR PREP

The substrate must be clean, even, and load bearing. The ARDEX thin-set mortar used for bonding the ARDEX TLT™ Waterproofing Membrane must be appropriate for the substrate and it must penetrate and engage the membrane's fleece. We recommend using an ARDEX modified thin-set mortar to install the membrane to a vertical substrate. Cut the membrane to size prior to application.

### STEP 1

Apply the appropriate ARDEX thin-set mortar to the substrate using a 1/4" x 3/16" (6 x 5 mm) V-notch trowel. Press the ARDEX TLT™ Waterproofing Membrane fully into the bond coat. Work the membrane into the mortar by applying pressure to the membrane with the flat side of the trowel (held at an angle) in smooth, diagonal sweeps. All air bubbles must be removed.

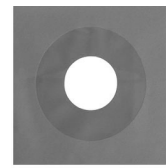
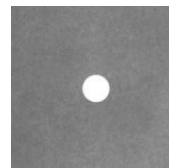
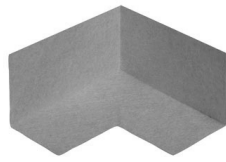
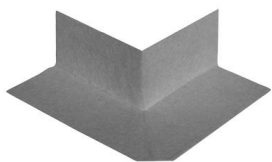


### STEP 2

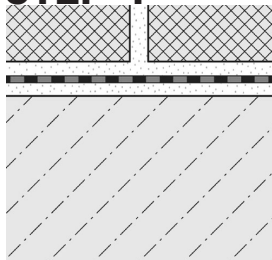
Seams can be constructed by overlapping the edges of the ARDEX TLT™ Waterproofing Membrane 2" (5 cm) using an ARDEX modified thin-set mortar, or by abutting the edges and covering the joint with ARDEX TLT™ Seam Tape using an ARDEX modified thin-set mortar.

### STEP 3

For inside and outside corners, adhere pre-formed ARDEX TLT™ Inside and Outside Corners. For floor/wall connections, use waterproof ARDEX TLT™ Seam Tape. Install ARDEX TLT™ Pipe Seals at shower head, body sprays, etc. and ARDEX TLT™ Mixing Valve Seals at the mixing valve. As an alternative to the pipe seals and mixing valve seals, other suitable sealants (i.e. ARDEX CA 20 P™) can be used to seal pipe protrusions and protect moisture sensitive solid backing panels at the mixing valve.



### STEP 4



Once the entire membrane - with seams, corners, and connections - has been completely bonded, and therefore waterproofed, the tile/stone may be applied. **Note:** Water testing of the assembly prior to setting tile, wait 24 hours to allow for final set of the mortar before testing to ensure waterproof performance of the assembly at seams and connections. **Note:** For tile installations using the thin-bed method, apply an ARDEX modified thin-set mortar directly to the exposed membrane surface and install the tiles, ensuring full coverage. For acid-resistant coverings, use an epoxy adhesive to set and grout the tile.



tile & stone  
Installation Systems

[www.ardexamericas.com](http://www.ardexamericas.com)

BUILT BY  
**YOU**  
backed by ARDEX