



PW 100/40

**Non-Permeable, Self-Adhered
Air/Vapor Barrier & Thru Wall Flashing**



**10 Year Limited
Warranty**

- PW 100/40 is a 40 mil cold applied self-adhering membrane composed of a tough cross laminated high density polyethylene coated on one side with a layer of polymer modified asphalt adhesive
- PW 100/40 is a peel and stick membrane for use as a Class I Vapor Retarder
- Compatible with and will adhere to most construction materials like steel, wood, concrete, building paper, block wall, dry wall and insulation board
- Available in a variety of roll widths
- There are multiple uses that utilize the aggressive adhesive characteristics of the membrane which include:
 - Use as a non-permeable full building wrap
 - Use as a thru wall flashing
 - Use as a complete waterproof self-adhered flashing for window and door installations requiring a 40 mil membrane
 - Sealing joints in exterior sheathing and penetrations in wall systems
- 120 day exposure rating
- Seals around nails and staples
- Meets the Brick Industry Association recommendation for a flashing material (see Brick Industry Association Technical Note 7A)



PW 100/40

Non-Permeable, Self-Adhered Air/Vapor Barrier & Thru Wall Flashing

PREPARATION:

All surfaces shall be clean, dry and free of any foreign materials. The surface shall be free of gaps, sharp edges and protrusions. Metal surfaces may need to be cleaned and/or abraded to achieve optimum adhesion.

Protecto Wrap Company recommends priming all substrates prior to application. Acceptable primers are: Protecto Universal Water Based Primer, 100 VOC and BT Primer. Refer to: Technical Data Sheets for primers.

When used on ICF, the surface must be clean, dry and free of all dirt, dust and debris prior to application of the membrane. Protecto Wrap Company recommends testing the ICF for adhesion. If adhesion to the ICF substrate is found to be marginal, then only the Universal Water Based Primer shall be used to ensure optimal adhesion. See also Protecto Universal Primer Free Membrane.

APPLICATION:

Full wall air/vapor barrier and thru wall flashing: PW 100/40 can be installed horizontally or vertically and must form water shedding laps. Side laps should be a minimum of 2", end laps should be a minimum of 4", all membrane terminations should be sealed with a 1" wide troweled bead of JS160-H Mastic or Protecto Sealant 25XL.

Window application: Apply first piece of PW 100/40 can to the rough opening sill; the PW 100/40 can should overlap the housewrap or building paper at the sill. Firmly roll into place using a hand roller (J-roller, laminate roller) to smooth out any wrinkles, air bubbles or creases that would allow water to migrate behind the membrane. Set window into the rough opening and fasten per window manufacturer's instructions. Apply vertical pieces of PW 100/40 can over the nailing flange at the sides of window frame and directly onto the exterior sheathing, firmly roll into place using a hand roller to smooth out any wrinkles, air bubbles

AVAILABLE SIZES:

4", 6", 9", 12", 18",
24", 36" x 75'

or creases, apply the final piece of PW 100/40 can over the top nail flange and overlap the vertical sides pieces adhering directly to the exterior sheathing, firmly roll into place using a "J" roller or hand roller to smooth out any wrinkles, air bubbles or creases. Apply housewrap or building paper over the PW 100/40 can at the sides and head of the window. Use housewrap tape or equivalent to seal the housewrap to the exterior of the PW 100/40 can.

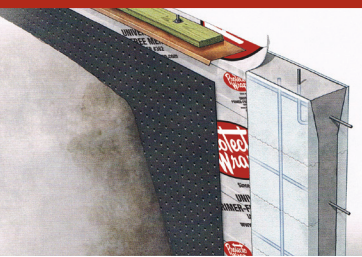
Inverted applications: the substrate must be fully primed and allowed to cure prior to full application. Membrane should be firmly rolled into place using a hand roller to smooth out any wrinkles, air bubbles or creases. Mechanical fasteners should be applied at perimeter of membrane as needed to ensure full contact.

Cold weather applications: products should be stored in original containers in a warm dry area between 40°F to 90°F (5°C to 32°C). Product should be kept warm a minimum of 24 hours prior to and just up to installation. Protecto Wrap Company recommends testing substrates for adhesion. If adhesion to substrate is found to be marginal, then a primer shall be used to ensure optimal adhesion. Refer to: "Technical Letter Cold Weather Applications".

NOTE: For the most current information, refer to the Protecto Wrap website at www.protectowrap.com.

RELATED PRODUCTS

UNIVERSAL PRIMER-FREE MEMBRANE



This high performance thru-wall membrane is designed to be applied down to -20°F (-28°C) without a primer. Also specifically designed for use as a below grade waterproofing membrane, seals skirt board foundation to wood frame interface, ICF waterproofing membrane and as an air and vapor barrier.

PROTECTO SEALANT 25XL

Protecto Sealant 25XL is a high performance, one component, polyurethane sealant. It is a durable weatherproof sealant that offers excellent performance for back bedding nail flanges for window and door installation and sealing door thresholds.



JS160H MASTIC



A rubberized blend of bituminous and synthetic resins used for sealing detail cuts and membrane terminations. Has excellent adhesion to steel, concrete and membrane.



Protecto Wrap Company
1955 S. Cherokee Street
Denver, CO 80223
(800) 759-9727
www.ProtectoWrap.com

