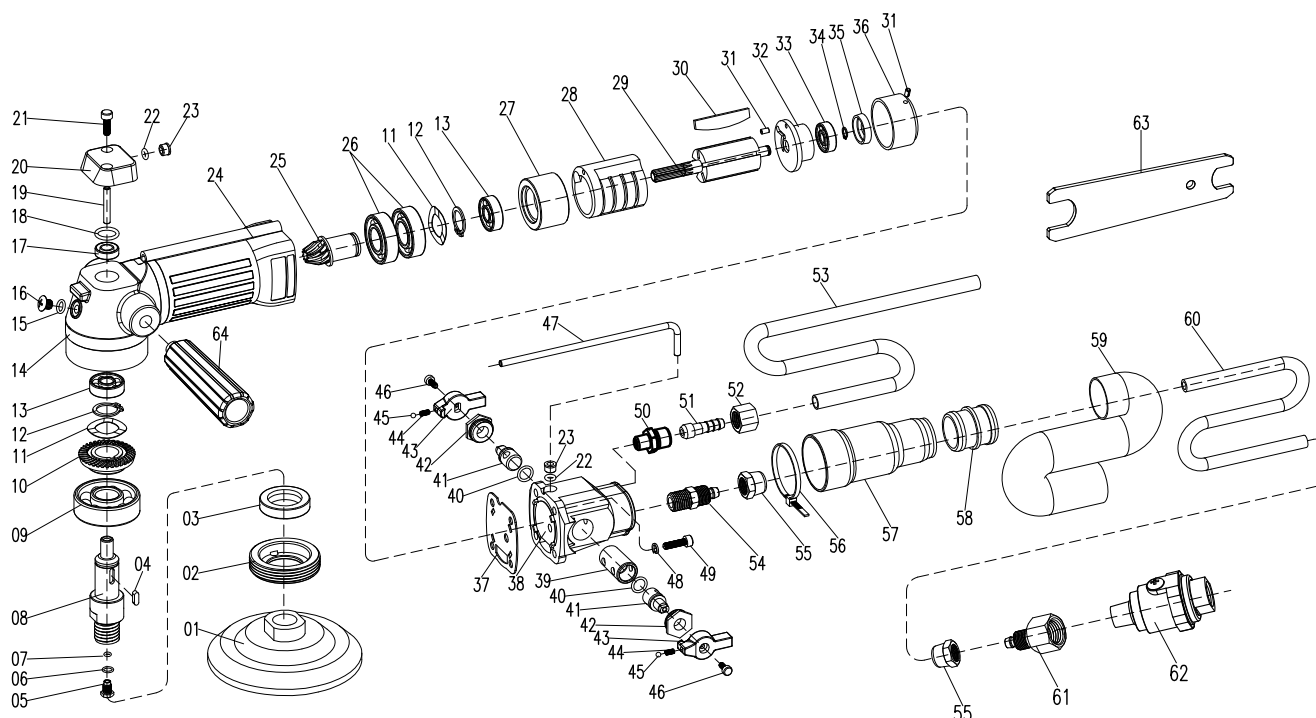




Air Polisher ELA-601-01

□5/8-11 □M14 □M16



Ref.No.	Parts No.	Description	Q'ty	Ref. No.	Parts No.	Description	Q'ty
01	2611-1	Backer Pad	1	33	626zz	Bearing (626zz)	1
02	2618-1	Tighten Nut	1	34	2615-10	Retaining Ring (Ø6)	1
03	TC22-32-7	Oil Seal(TC22X32X7)	1	35	2617-3	Bearing Cap	1
04	2612-1	Key	1	36	2618-5	Air Inlet Case	1
05	2616-20	Nozzle	1	37	2611-4	Body Packing	1
06	2615-24	O-Ring	1	38	2618-6	End Case	1
07	2615-28	O-Ring	1	39	2616-4	Valve Bush	1
08	2612-10	Gear Shaft	1	40	2615-11	O-Ring (Ø1.5X8)	2
09	6302zz	Bearing (6302zz)	1	41	2616-5	Air Valve	2
10	2611-36	Bevel Gear (36T)	1	42	2616-6	Nut	2
11	2615-1	Wave Washer (Ø15)	2	43	2618-7	Valve Lever	2
12	2615-2	Snap Ring (Ø15)	2	44	2615-12	Spring	2
13	608zz	Bearing (608zz)	2	45	2615-13	Ball Bearing (Ø3)	2
14	2618-2	Motor Housing	1	46	2615-14	Screw (M3X8)	2
15	2615-3	O-Ring (Ø1.5X6)	1	47	2612-5	Water Pipe	1
16	2615-4	Screw (M6X5)	1	48	2615-15	Washer (M4)	4
17	TC8-15-5	Oil seal (TC8X15X5)	1	49	2615-16	Screw (M4X16)	4
18	2615-5	O-Ring (Ø2X11.5)	1	50	2616-7-1	Water Hose Joint	1
19	2612-3	Inner Pipe	1	51	2616-8	Water Hose Nipple	1
20	2618-3	Pipe-Joint Assembly	1	52	2616-9-1	Nut	1
21	2615-6	Screw (M4X12)	2	53	2611-5	Water Hose	1
22	2615-7	O-Ring (Ø1.9X3.4)	2	54	2616-22-1	Air-Hose Joint	1
23	2617-15	Pipe Bush	2	55	2616-21-1	Nut	2
24	2617-1	Body Cover	1	56	2615-17	Clamp	1
25	2611-11	Spiral Bevel Pinion	1	57	2617-4	Exhaust Cover	1
26	6002zz	Bearing (6002zz)	2	58	2617-5	Connector	1
27	2616-30	Front Plate	1	59	2611-6	Exhaust Hose	1
28	2612-4	Cylinder	1	60	2611-7	Air Pipe	1
29	2611-2	Rotor	1	61	2616-42	Air Inlet Connector Nut	1
30	2611-3	Vane	5	62	2611-25	oil spray	1
31	2615-9	Spring Pin (Ø2.5X5)	2	63	2611-8	Wrench	1
32	2616-3	Rear Bearing Case	1	64	2617-2	Grip (Option)	1

Air Polisher

ELA-601-01



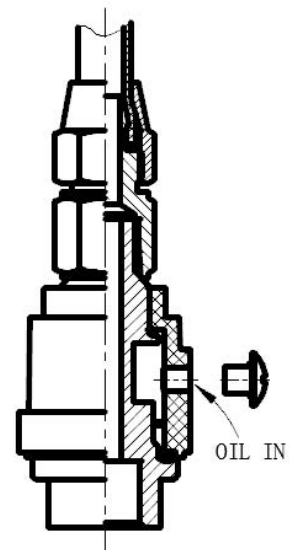
Thank you for purchasing our high performance ELA-601-01 pneumatic air polisher.

The ELA-601-01 air polisher offers following features:

1. ELA-601-01 series of air polisher are high speed, lightweight and compact in a design.
2. All moving parts are heat treated providing anti-grinding protection.
3. The design for the control of water and air are environmentally friendly, while providing operator convenience.
4. Adding mini oil spray to the grinder makes it greasy throughout the operation thus can be more durable.
5. The rear exhaust design can make this machine quiet and keeps exhaust away from hands and stones.

Please adhere to the following checklist:

1. Please check if the package is broken.
2. Please check if all parts and accessories are included.
3. Compressed air should be dry and cool, as high-moisture air will lead to internal rusting that could cause machine failure.
4. The air pressure should normally be maintained at 0.6~0.8MPa.
5. Always supply adequate water during operation.
6. To avoid machinery failure during operation, make sure the machine is filled with 10# oil before operation.



7. When grinder will stop working, especially if it will be not used for a period of time, the machine should be well oiled and rotate for almost five seconds without loading before off it, this is a super important step to avoid rusting.

8. Machine should be well oiled to prevent rusting especially after a period of non use.
9. To prevent rusting, always check that there is special-purpose oil in the machine. If the machine is not functioning properly, manually spin the sander.

In case of any failure, please contact your local dealer. Never disassemble the machine as doing so may lead to accidentally damaging parts.